

Features

- Cost-effective contactor
- Enclosure sets in various sizes
- Contact from above, below or on both sides
- Contact pressure for approx. 200 – 360 contact pins, depending on the spring force
- Touch protection and enclosure to remove ambient light, optional
- Small, light and easy to use



The PA200 manual lever operated adapter is suitable for use to connect small and mid-sized PCBs for function tests, or as a programming adapter, for example. The adapter enclosures are easily replaceable.

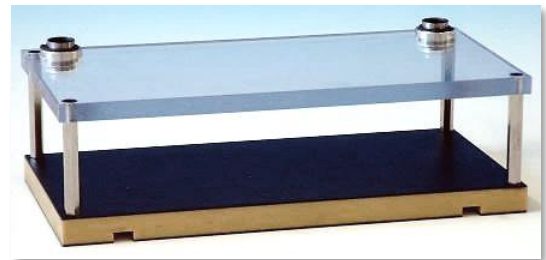
In order to insert the DUT, the lower enclosure must be pulled forwards and the DUT placed on the spring-loaded positioning pins. For testing, push the enclosure backwards and operate the linear clamp. When contacting from below, the top enclosure acts as the hold-down bracket. PCBs installed on one side can be placed flat on the lower enclosure and contacting can then be performed from the top. The vertical guide ensures correct positioning. Optional plates on the sides of the enclosures provide space to install adapter connectors.

Application

- PCB contact with spring contact pins
- Controller programming with test pads
- LED tests
- Climate tests from -40 to +90 °C
- Lateral contacting of connectors

As a systems manufacturer, we provide manual and pneumatic test adapters. Our assortment also includes intricate special adapters. Visit our homepage to learn more.

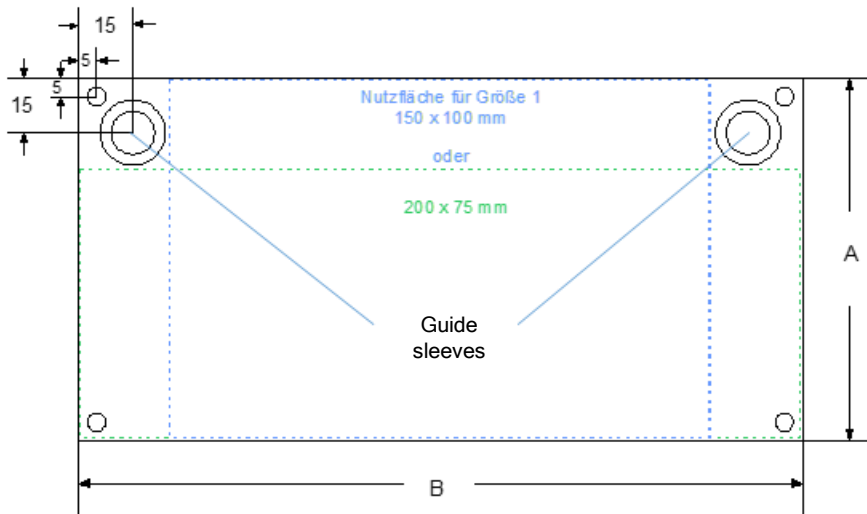
We look forward to hearing from you!



Top enclosure



Lower enclosure



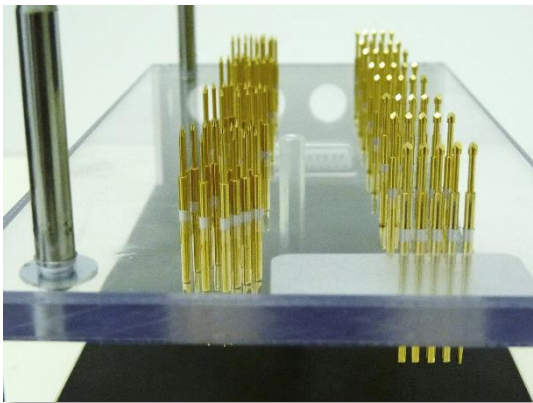
Order information

Description	Size	A [mm]	B [mm]	Item number
Lower enclosure	1	100	200	11.10-U
Lower enclosure	2	150	200	11.20-U
Lower enclosure	3	100	300	11.30-U
Top enclosure	1	100	200	11.10-O
Top enclosure	2	150	200	11.20-O
Top enclosure	3	100	300	11.30-O
Base frame	-	240	200	11.00-G

Customizing

We offer DUT-specific test adapters as a service.

- Import your PCB data
- CNC processed adapter plates
- Use of sleeves and spring contact pins
- Installation of rigid or spring-loaded positioning pins
- Installation of hold-down pins.
- Contacting connectors
- Installation of components and wiring



Application example 1
Top enclosure with spring contact pins



Application example 2
DUT with spring contact pins and hold-down pins