

Features

- Compact design with a large range of functions
- High-resolution image sensors and optics supported by powerful homogeneous LED lighting
- Turnkey solution - Analysis algorithms and test framework from GTS
- Suitable for universal applications due to easy exchange of DUT holders

SENTRY from GTS is a complete in-house development to meet the demand for a compact and competent visual test system. The device can be easily integrated into existing or new manual product lines, or into automated lines with the automatic feeder.

We place great value on our ability to offer our customers a comprehensive system solution - no matter which product you want to test, we simply need to know the features you value the most to provide a suitable system. GTS can generate suitable evaluation algorithms in NI Vision on your behalf. We are also happy to organise every aspect to ensure seamless integration into your company network on request.

Our developers have worked with NI Vision for many years and produce reliable and accurate evaluation strategies to guarantee the quality of your product at each production step.

Application

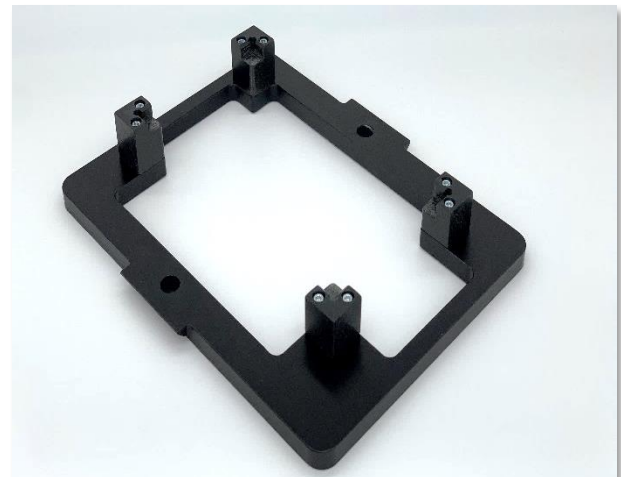
Monitoring of the manual gluing process of various device labels (serial numbers, barcodes, 2D codes, certification labels) for the correct position and content.

Final check of the product for damages caused during the production process (e.g. correct alignment of plug contacts, missing housing components, missing screws or assembly errors, colours)

Checking the dimensional accuracy of a DUT (housing correctly inserted, PCB completely cleanly separated from the panel)



SENTRY overview: Front side



SENTRY detailed view: Exchangeable holders for DUT insertion

Specification

Operating voltage	230 V
Power	Max. 120W
Max. resolution	8MP
Photo	3280 x 2464 pixels
Image sensor	1/ 4"
Focal length	3.00 mm
Working distance	100 - ∞ mm
Test specimen dimensions	15 x 25 x 10 cm
Number of levels	5 as standard
Installation surface (WxHxD)	468 x 562 x 335 mm